

ANTAL ARBETSPLATSER OCH
MÖTES/KONFERENSNUM

LOKAL A: (LOA 267 M²)

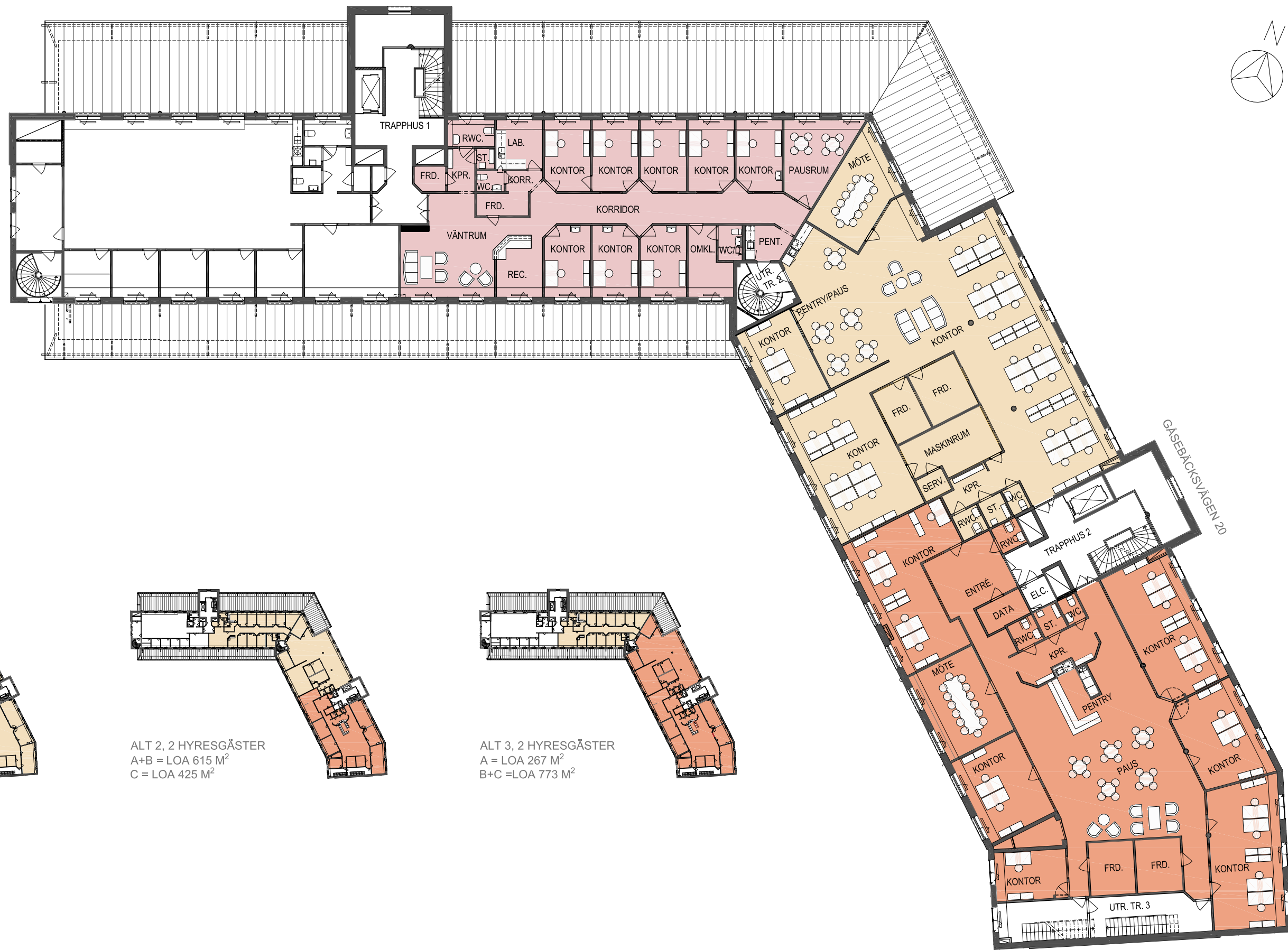
- 8 I RUM
- 0 KONFERENS/MÖTESNUM

LOKAL B: (LOA 348 M²)

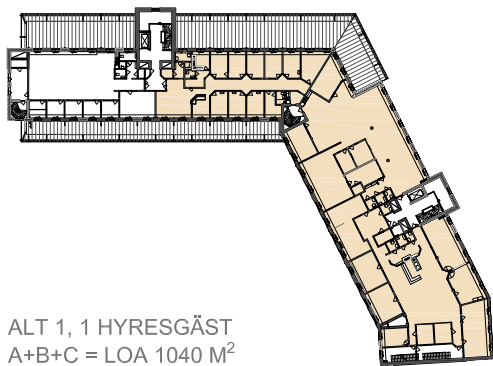
- 20 I ÖPPET LANDSKAP
- 2 I RUM
- 1 KONFERENS/MÖTESNUM 12 PERS

LOKAL C: (LOA 425 M²)

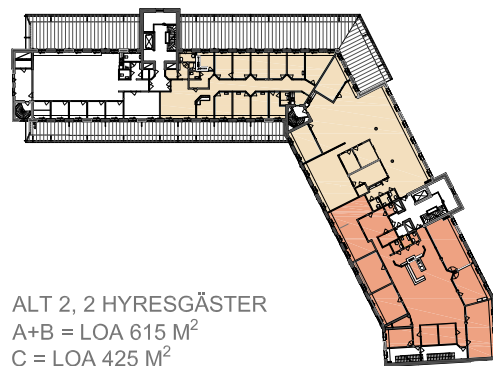
- 17 I RUM
- 1 KONFERENS/MÖTESNUM 14 PERS



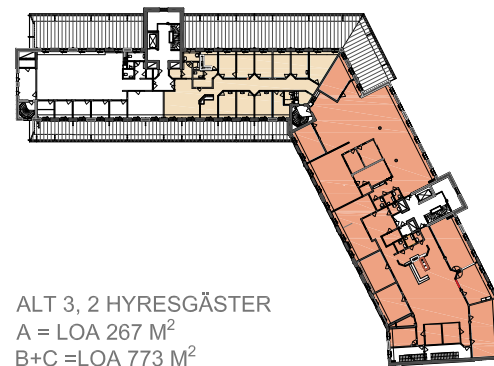
ALTERNATIVA PLANINDELNINGAR



ALT 1, 1 HYRESGÄST
A+B+C = LOA 1040 M²



ALT 2, 2 HYRESGÄSTER
A+B = LOA 615 M²
C = LOA 425 M²



ALT 3, 2 HYRESGÄSTER
A = LOA 267 M²
B+C = LOA 773 M²